



**LOCHLIE**  
CONSTRUCTION  
GROUP

YOUR CONTRACTOR OF CHOICE

We are

# LOCHLIE CONSTRUCTION GROUP

**Established in 2014, Lochlie Construction Group offers fully streamlined construction and refurbishment services across West Central Scotland.**

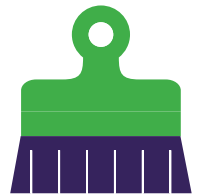
Founded by father and son team Douglas and David Aitken, the company has gone from strength to strength working on some incredible projects. From traditional construction projects to steel buildings and renewables, we have a reputation as a trusted and versatile contractor. Our expertise in the refurbishment sector in particular, working on listed buildings and within conservation and heritage areas, makes us what we are – your contractor of choice.

From your very first meeting to the moment you have the keys in the palm of your hand, you'll work with a friendly, knowledgeable and trusted team of experts who get the job done.



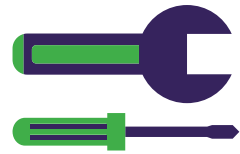
# SERVICES

Our business works across 4 divisions offering a range of services, delivered across West Central Scotland. All services are provided by our in house team of skilled tradesmen and Managers, who are all qualified and accredited to their relevant industry standards.



## CONSTRUCTION & REFURBISHMENT

Our Construction & Refurbishment division is focused on the provision of a premium service to both private domestic clients and commercial clients across Glasgow and West Central Scotland.



## PLANNED MAINTENANCE & VOIDS

Our multi-trade teams offer small-scale planned maintenance and void services to a range of public & private sector clients.



## RENEWABLES

Our Renewables division offers a data-driven approach to your renewables requirements. Our in-house team are trained in the installation of Solar PV, Battery Storage, Air Source Heat Pumps and Electric Vehicle Charging Points.



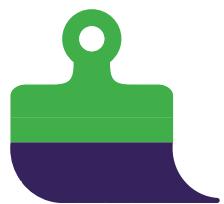
## STEEL BUILDINGS

Our steel buildings division offers complete turnkey solutions for steel buildings across the West of Scotland



## ELECTRICAL WORKS

With our team of highly skilled and licensed electricians, we deliver reliable and efficient electrical services tailored to meet the unique needs of our clients. From installations to maintenance and repairs, our company is dedicated to providing safe and professional solutions for all your electrical needs.



## PAINTING & DECORATING

Our company offers top-quality painting and decorating services for both residential and commercial projects. With a keen eye for detail and a commitment to delivering exceptional results, we transform spaces into beautiful and inspiring environments.

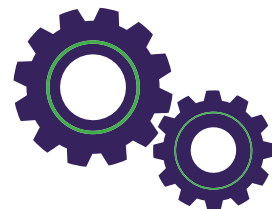
# OUR TEAM

**Our in house team is made up of experienced managers and supervisors, skilled tradesmen and enthusiastic trainees. We operate a comprehensive training programme to ensure our whole team is up to date on the latest health, safety and environmental legislation, and offer continued development to those who wish to progress along their career path within the business.**



## **MANAGEMENT & SUPERVISION**

Our team of Site Managers and Supervisors offer over 100 years combined experience, and are all qualified to SMSTS level as a minimum



## **LOCHLIE DIRECTLY EMPLOYED TRADES**

Our team is made up of over 50 experienced trades people, across all the major trades, including joinery, electrical, plumbing & heating, bricklaying, painting and decorating.



## **TRAINEES & APPRENTICES**

We employ 11 trainees and apprentices at different stages across the main trades and in professional courses like Quantity Surveying. These young people are the future of our business and we invest heavily in ensuring they have access to the best training we can offer.

# ACCREDITATIONS

COMMITTED TO QUALITY & SAFETY



We are proud to hold a variety of industry accreditations, demonstrating our commitment to our core values of Quality and Safety.



# OUR CLIENTS

## OUTSTANDING CLIENT RELATIONS

We are committed to establishing and maintaining excellent relationships with our clients, who trust us to get the job done. We are proud to say that over 50% of our business in 2023 came from either returning clients, or existing professional relationships.



**HOLLIS**



wet wall works  
works wonders



**armour**  
CONSTRUCTION CONSULTANTS



**nbm**  
Construction Cost Consultants



**FRAMED ESTATES**



**Arnold Clark**

# PROJECT EXAMPLES

## Office Headquarters, Hillington

### Refurbishment of former warehouse to provide carbon-neutral office and storage space

#### BACKGROUND

Following significant business growth, Lochlie Construction Group required new, larger offices, having worked out of serviced offices for 8 years. They bought an empty industrial unit in Hillington and completed a comprehensive refurbishment with sustainability and collaboration at the heart of the design.

#### WHAT WE DID

The scope of works included a full strip out, with removal of roof and glazing. All internal steel beams were retained and refurbished with new roof cladding and rooflights installed by a specialist sub-contractor. EWI and a new entranceway feature completed the exterior and were delivered by our in-house teams. Internally the building was divided to create office space with a warehouse storage facility to the rear. Our in-house joinery team completed all interior sheeting and joinery, while our M&E team completed a full new installation including underfloor heating, ventilation and full electrical fit-out. The M&E team also installed and commissioned our air source heat pump system. Additional renewable technology included a 40Kw solar PV system, designed and installed by others (now offered in-house by our own team for 2023).

All painting and decoration was delivered by our in-house team, while specialist floor finishings were delivered by a specialist sub-contractor.



# Wholesale Domestic Bathrooms

## Solar PV system to warehouse storage facility

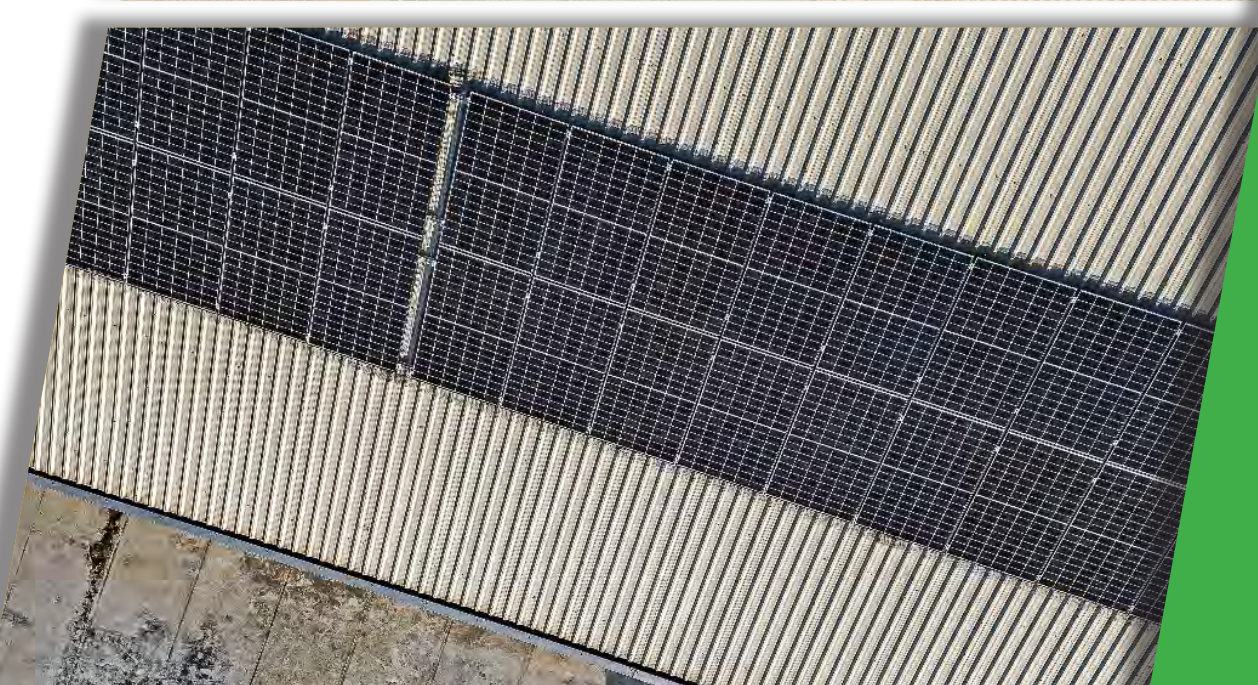
### BACKGROUND

We were approached by a local client to design and install a 63.5 kwp solar PV system on one of their Hillington buildings, a large warehouse and storage facility

### WHAT WE DID

We carried out desktop modelling using our specialist software, and followed up with a site visit, incorporating drone survey and electrical condition inspection for both buildings, to finalise a suitable design for this client based on their consumption

We completed their DNO application, and confirmed their exemption from planning rules within the Hillington Park Special Planning Zone. Our in-house team completed the installation and commissioning over a period of 3 weeks in total, with the client feedback describing our team as helpful, friendly and supportive.





# Outdoor Classroom, Linwood

## Additional classroom facility for childcare organisation

### BACKGROUND

We were appointed by a returning client to deliver a new classroom building to help them accommodate increased demand for their childcare services.

### WHAT WE DID

We worked closely with the client and design team to deliver a purpose-built facility incorporating open and flexible classroom space, opening directly into the gardens. The steel-framed building also features a host of sustainable features including solar PV, battery storage, air source heat pump and rainwater harvesting.

This project was overseen by a dedicated Site Supervisor and delivered in an active environment with the existing facility in use for the duration of the works. Our team developed a comprehensive risk assessment and delivery plan to ensure that the service users were not impacted by our works, and that high risk works were planned outwith the busiest times to minimise risk.



# Macmillan Cleaning & Restoration

## Solar PV system across two buildings

### BACKGROUND

We were approached by a local client to design and install a solar PV system on their Hillington buildings

### WHAT WE DID

We carried out desktop modelling using our specialist software, and followed up with a site visit, incorporating drone survey and electrical condition inspection for both buildings, to finalise a suitable design for this client based on their consumption.

We completed their DNO application, and confirmed their exemption from planning rules within the Hillington Park Special Planning Zone. Our in-house team completed the installation and commissioning over a period of 3 weeks in total.



# The Inverclyde Shed

## Refurbishment of post-war light industrial unit to provide new home for charity community group

### BACKGROUND

This disused light industrial unit was acquired through a community asset transfer process to provide a long term home for The Inverclyde Shed, a charity which works to reduce social isolation and advance health & wellbeing initiatives. We were appointed to this project following a competitive tender process.

### WHAT WE DID

The scope of works included the re-use and refurbishment of the existing steel frame, installation of new high-durability cladding to contend with the waterside location, and internal refurbishment works, including installation of kitchen facilities, and creation of various workspaces.

We also carried out a full new mechanical and electrical installation including solar PV.

The project was led by one of our most experienced Site Managers, with our in-house trade teams delivering the majority of the works with support from specialist sub-contractors.



# Arnold Clark, West Lothian

## New build cold-rolled steel building with turntable to provide 360° vehicle photography suite

### BACKGROUND

Following on from a boost in online car sales post-pandemic, we were appointed by Arnold Clark to deliver a steel building to be used for high resolution vehicle photography.

### WHAT WE DID

We work closely with the client using our licensed software to finalise the design and specification for the building. Our in house team of skilled tradespeople, including joiners, plumbers and electricians delivered the build, led by an experienced Site Manager over a 16 week programme.



# Wet Wall Works, Greenock

## Solar PV system and Tesla Powerwall battery

### BACKGROUND

Following a number of previous construction projects with this client, they approached us to discuss the potential for solar PV on their main warehouse and showroom following a substantial rise in their energy bills.

### WHAT WE DID

We used the client's half-hourly data and consumption patterns and our knowledge of the existing building & roof to model various options for them, recommending an 11kwp system coupled with a 13.5kw Tesla Powerwall battery.

We submitted their DNO application, with the installation works carried out by our in-house team.



# CURRENT PROJECTS

## Projects Currently On Site

**We have a number of projects recently completed and currently ongoing around West Central Scotland. These include:**

### **Kooltech**

86kWp solar PV system, due to be installed in Summer 2024, based locally to us in Hillington

### **Porelli Gelato & Ice Cream**

112kWp solar PV system currently awaiting planning consent from local authority

### **Filshil**

We have installed monitoring software for an existing PV system for this client recently, and await data on whether additional PV is required

### **Private Client (Manufacturing)**

40kWp PV system to be installed for this Glasgow based client (in conjunction with a new-build project awaiting planning)

### **Veitchi**

Currently on-site installing a 35kWp system for this client

# FEEDBACK

## What Our Clients Say

We are very proud of our excellent track record in customer satisfaction, securing over 50% of our business in 2023 through repeat custom or recommendation. We'd like to share some of our clients' feedback, which says it better than we ever could!

"As a company that had to adapt to coronavirus and all the associated issues, their professionalism shone through. Fabulous company to work with and everyone on site was courteous and polite when we visited."

**Mark Fletcher**  
**Carrick Community Leisure Group**

"A small but technically complex project re-using an existing three-storey steel frame – the finished project has been executed extremely well."

**Bruce Newlands**  
**The Inverclyde Shed**

"From first meeting, the team worked quickly and specifically to the job description to agree a price. They were extremely helpful and supportivethrough to completion. Good company, good people."

**Geddes Family**  
**Finnieston Clothing**

"I want to thank you all at Lochlie for your work and attention throughout the project, in particular David, Douglas, Davey and Derek all of whom, I know, often went above and beyond to be helpful and made communication easy. I am very grateful."

**Mrs L, Private Client**

# WORK WITH US

**Thank you for your interest in working with Lochlie Construction Group.**

We hope we have covered all the information you need, but please do not hesitate to get in touch to discuss any aspect of this document.



[claire.mcblain@lochlie.co.uk](mailto:claire.mcblain@lochlie.co.uk)



0141 212 0000



[www.lochlie.co.uk](http://www.lochlie.co.uk)







 **LOCHLIE**  
CONSTRUCTION  
GROUP  
YOUR CONTRACTOR OF CHOICE

Click to  
**FOLLOW US**

